

INDEX OF GEOPARTICIPATION

CZECH MUNICIPALITIES IN 2019

Jaroslav **BURIAN**¹, Radek **BARVÍŘ**¹, Daniel **PAVLAČKA**¹, Jiří **PÁNEK**²,
Jiří **CHOVANEČEK**² and Vít **PÁSZTO**¹

Palacký University Olomouc, Faculty of Science

¹ Department of Geoinformatics

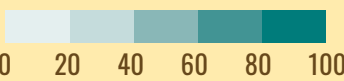
² Department of Development
and Environmental Studies

UTM Zone 33N Map Projection

Topographic base: ©ArcČR,
ARCDATA PRAHA, ZÚ, ČSÚ, 2016

© Journal of Maps, 2022

INDEX OF GEOPARTICIPATION



- National Network of Healthy Cities
- NUTS 3 region
 - regional center
 - municipality with extended power

Using crowdsourcing, we collected 55 attributes for 6,258 municipalities in Czechia. Based on the literature review and discussion with local officials, 12 significant indicators were identified and divided into three dimensions of the Index of Geoparticipation (Participation, Communication, and Transparency). Only binary values of 0/1 were used, even for data where higher detail was known. The Index of Geoparticipation was calculated using a weighted sum. Weights were determined using the Saaty method. Six experts were involved in the process of weight setting.

The map reveals higher values of the Index of Geoparticipation commonly in large cities, where geoparticipation principles are more popular than in the countryside. However, there are also progressive small municipalities with high level of the index, e.g. the hot spot surrounding the town of Litovel in Centra Moravia and the region around the town of Trutnov in north Bohemia.

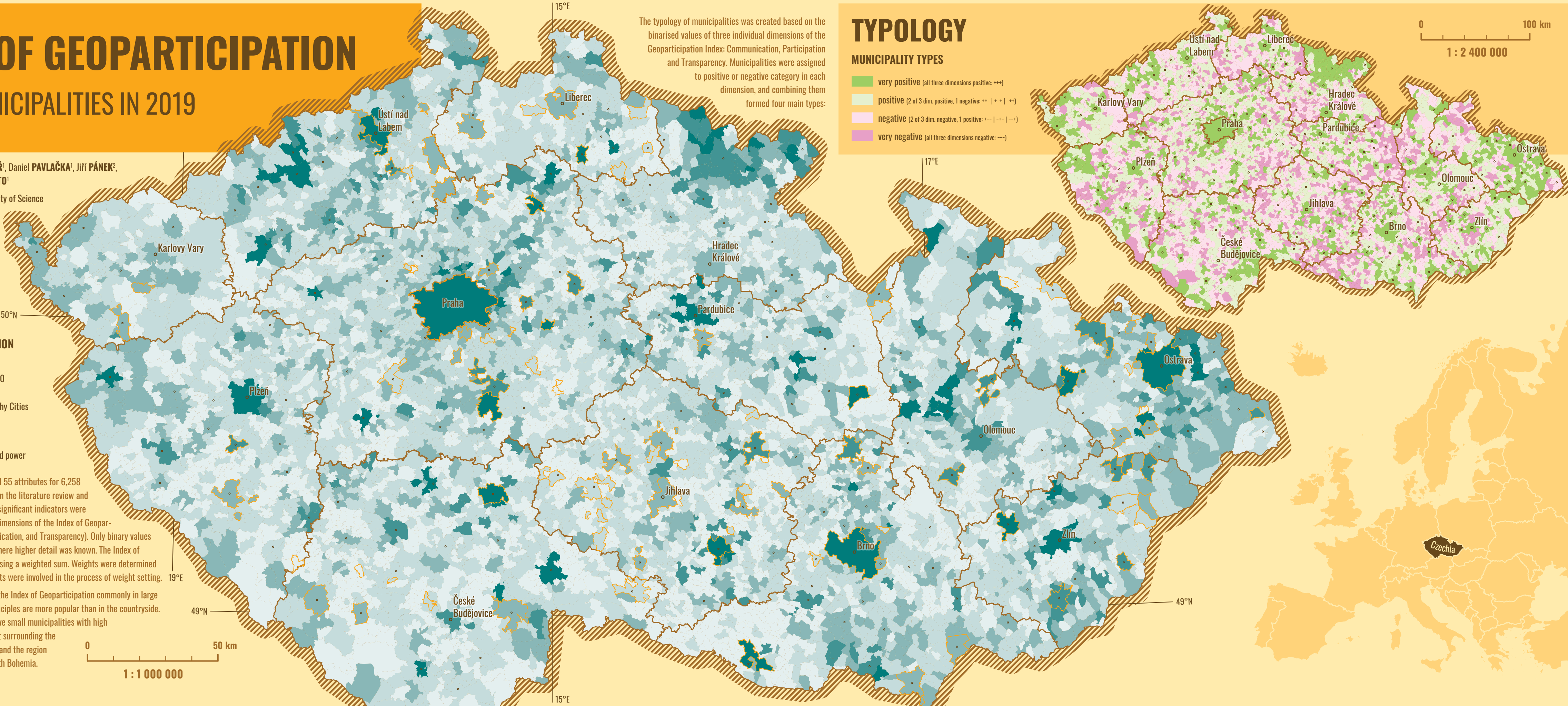
The typology of municipalities was created based on the binarised values of three individual dimensions of the Geoparticipation Index: Communication, Participation and Transparency. Municipalities were assigned to positive or negative category in each dimension, and combining them formed four main types:

TPOLOGY

MUNICIPALITY TYPES

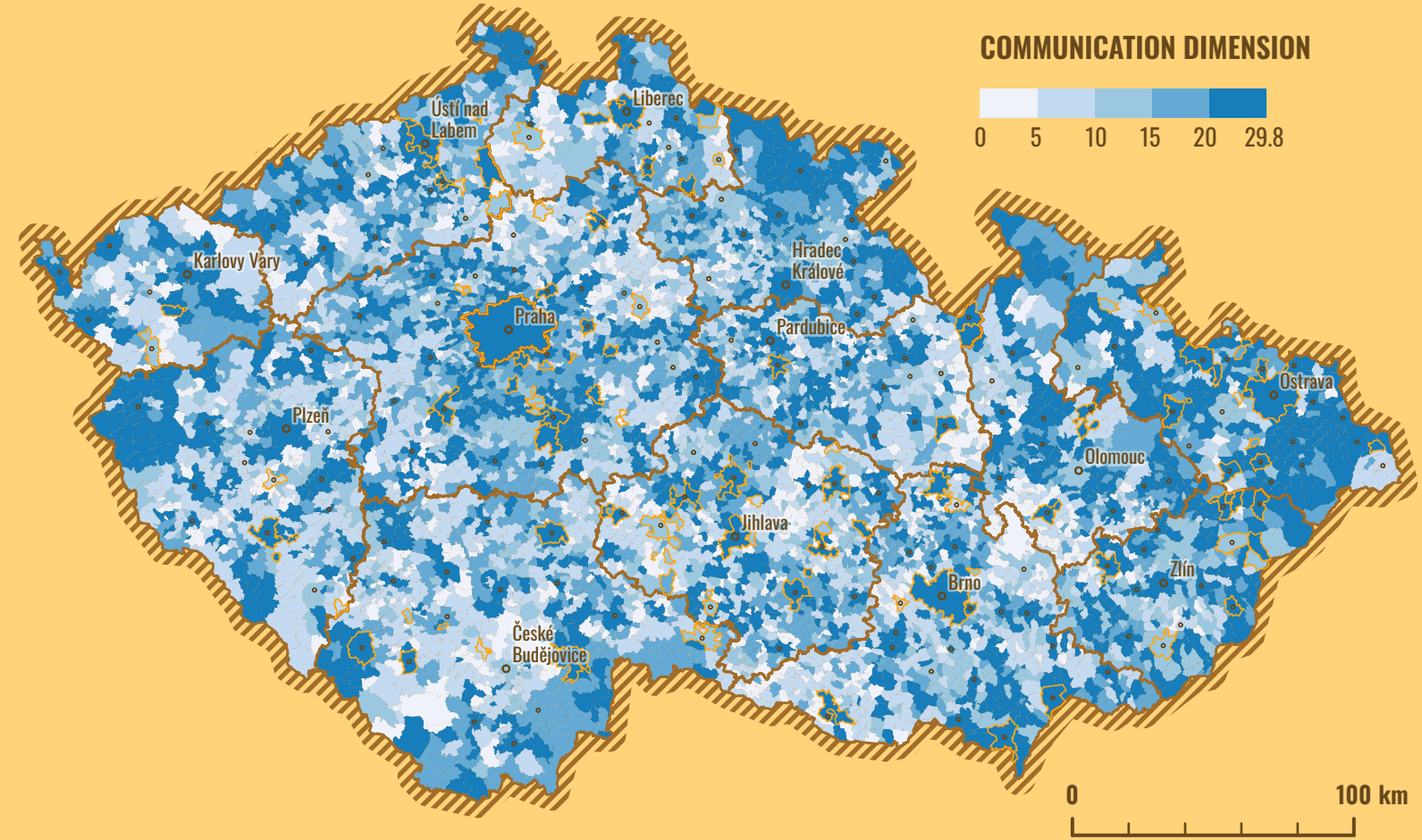
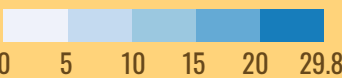
- very positive (all three dimensions positive: +++)
- positive (2 of 3 dim. positive, 1 negative: ++- | +-+ | -++)
- negative (2 of 3 dim. negative, 1 positive: +-+ | -+- | --+)
- very negative (all three dimensions negative: ---)

0 100 km
1 : 2 400 000



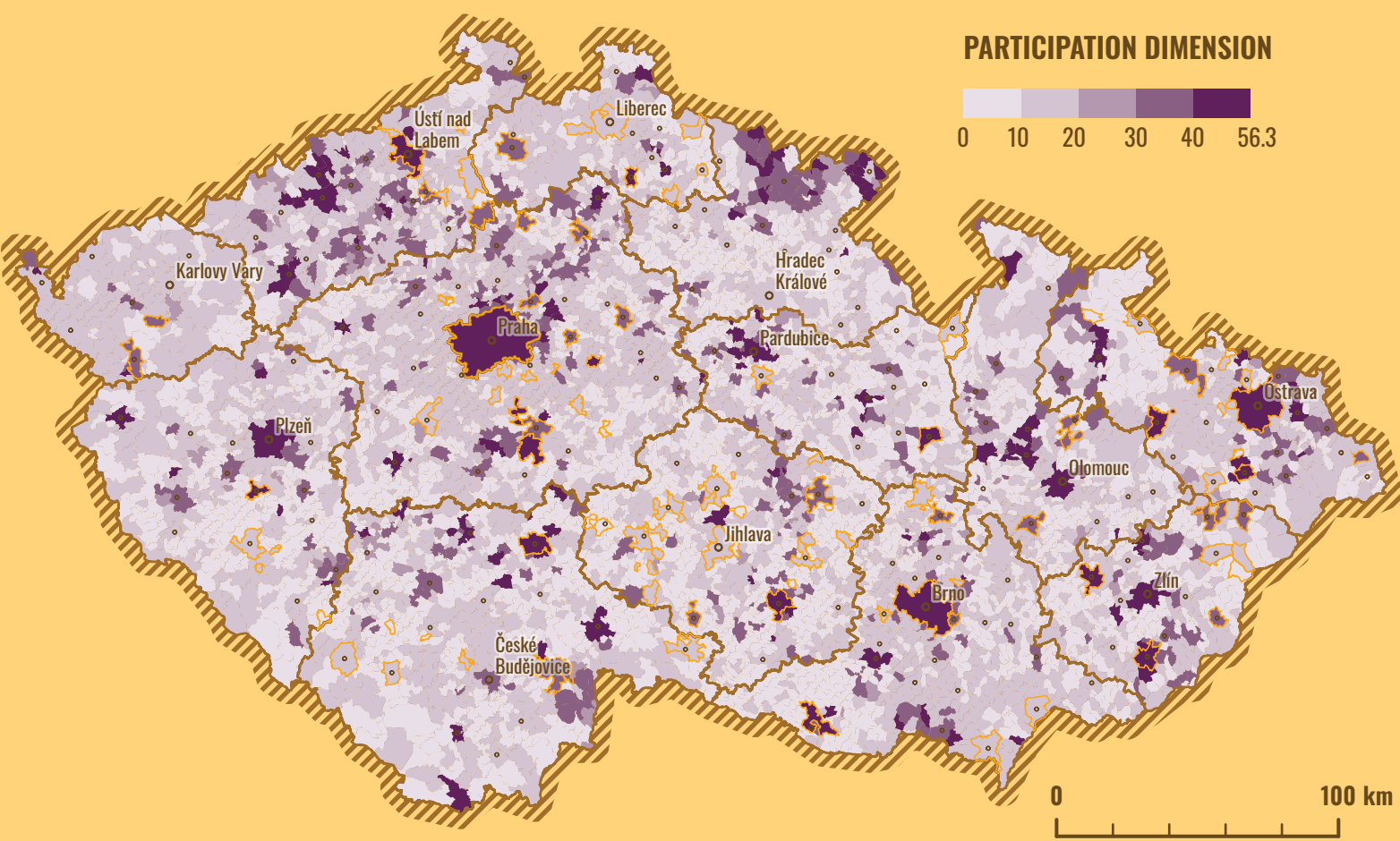
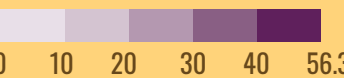
COMMUNICATION

COMMUNICATION DIMENSION



PARTICIPATION

PARTICIPATION DIMENSION



TRANSPARENCY

TRANSPARENCY DIMENSION

