

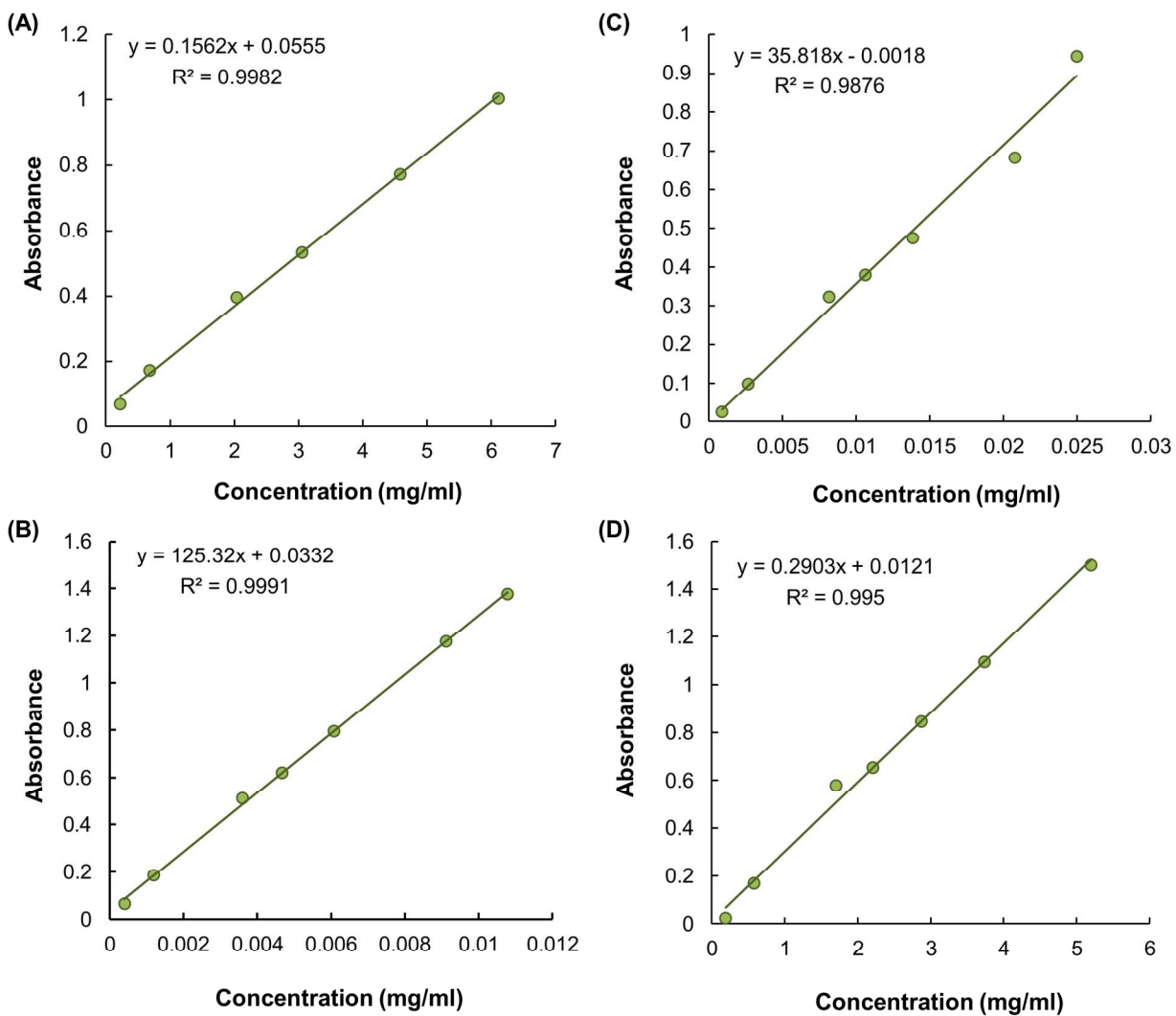
## Supporting Information

Hypromellose-graft-chitosan and its polyelectrolyte complex as novel systems for sustained drug delivery

Wing-Fu Lai,<sup>1</sup> Ho Cheung Shum<sup>1,2,\*</sup>

1. Department of Mechanical Engineering, The University of Hong Kong, Hong Kong Special Administrative Region, China
2. HKU-Shenzhen Institute of Research and Innovation, Shenzhen, Guangdong, China

\* Corresponding author: [ashum@hku.hk](mailto:ashum@hku.hk)



**Figure S1.** The absorbance-concentration curves of (A) MT, (B) MB, (C) TH and (D) MF.